

### Features

- 8 LED Driver Outputs
- High Communication Speed
- Expandable I/O

The INTELLIGENCE LED-201 is a microprocessor based two wire remote LED driver module that is used for cost effective remote annunciator application.

The module receives digital on/off or open/close status signal from a two wire digital remote field unit such as; switch, push button, voltage free contact or open collector output from other devices, etc. via 2 wire field bus and send the signal to LED to show the status of the field devices for annunciator application.

An intelligent two wire remote LED driver unit, the LED-201 provides eight LED outputs and each can drive LED directly.

Each LED output can be configured to two modes, normal or alarm modes, via dip switch built in. This board also includes connection for "Reset Alarm", "Acknowledge" and "Lamp Test" switch.

### Communications

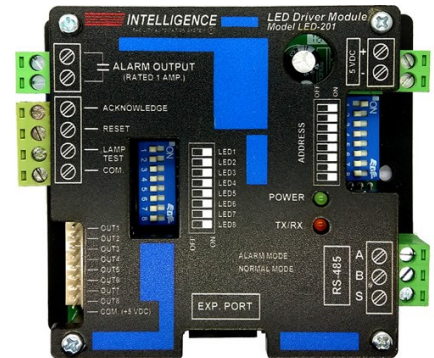
Communication to INTELLIGENCE LED-201 is handled through half duplex RS-485 serial communication at the data transmission rate at 19,200 bit/sec that is capable of transmitting multiple digital and analog signal up to 1.2 km via a 1 pair of twisted pair with shielded cable.

### I/O Expansion

LED-201 contains expansion port for the additional low cost LED driver expansion directly on the bottom of the controller. Up

to 1 LEDX-201 LED driver expansion board can be connected together (1 LEDX-201 and 4 LEDX-201) and each LEDX-201 gives additional 8 LED driver outputs.

## INTELLIGENCE Model LED-201 8 Channel LED Driver Module



### Specifications

<b>Power</b>	5 VDC
<b>Current</b>	100 mA (All LED off)
<b>Consumption</b>	250 mA (All LED on)
<b>Communications</b>	RS-485 via twisted pair with shielded cable
<b>Communications Speed</b>	19,200 bit/sec
<b>Bus Length</b>	1,200 m. max. via twisted pair with shielded cable
<b>Outputs:</b>	8 x 5VDC LED Output

Intelligent Control Systems Co., Ltd.

391 Silom Road  
Bangkok 10500  
Thailand  
Tel: (662) 2668852-4  
(662) 2665197  
Fax: (662) 2665198